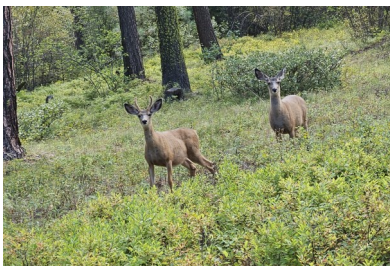


# IDAHO MOUNTED ORIENTEERING



## OLA SUMMIT

**SEPT 23RD, 2023**

**WEATHER PERMITTING**

### **Registration:**

**Friday 9/22: 6-8 pm, Saturday 9/23: 7am -12pm**  
**Riders out every 15 minutes starting at 7:30 am**

### **Dues:**

**Day Members: \$20**  
**Annual Members: \$15**  
**All riders 17 years or less: \$5**

### **What to bring:**

**Trusty steed at least 3 yrs. old**  
**Compass with 2 degree increments**  
**Pen or pencil**  
**Chair**  
**Water for you and your steed**  
**Certified Weed Free Hay**  
**Dish to share at potluck if staying for lunch**

### **Notes:**

**Ride is approx. 12 miles in length with good footing.**  
**High Valley Road is fairly steep for a short distance.**  
**Ride subject to cancellation depending on precipitation received prior to ride.**  
**Decent amount of parking.**

### **Directions:**

**From Emmett take Hwy 52 East towards Horseshoe Bend for approx. 14 miles. Or from Horseshoe Bend, take Hwy 52 West for approx. 9.4 miles. Turn North at the Triangle Restaurant (Sweet Ola Hwy) and proceed 17.1 miles to High Valley Road at far side of Ola. Turn right (East) on High Valley Rd for approx. 4.9 miles. Turn right (South) and proceed approx .1 mile to camp.**

### **Ride Managers:**

**Darell Stewart**  
**208-870-3952**

**Rita Stewart**  
**208-870-3950**

**Josh Kocher**  
**801-699-0216**